

0 - 2 YEARS

2 - 5 YEARS

5 - 10 YEARS

CAREER MAPS

Demonstrate how degrees from Bronx Community College can lead to rewarding careers in New York City. They serve to help students make informed decisions about their studies and their professional futures. Career Maps showcase jobs available to Bronx Community College graduates and the additional skills graduates will need—either through on-the-job training or through the attainment of new degrees—in order to advance within a field.

INFORMATION

- For additional information about the Electronic Engineering Technology (AAS) program, contact Ajaz Sana at ajaz.sana@bcc.cuny.edu or **(718) 289-5393**.
- For additional information about career opportunities associated with the Electronic Engineering Technology (AAS) program, contact Alán Fuentes at alan.fuentes@bcc.cuny.edu or **(718) 933-1604**.
- Continuing your education: The Electronic Engineering Technology (AAS) articulates with Electrical Technology at New York City College of Technology and with Science, Mathematics & Technology at SUNY Empire State.
- Please note: Electronic Engineering Technology (AAS) is not a degree in engineering. Students interested in pursuing engineering at Bronx Community College should consider the AS in Engineering Science.
- Be mindful that good grades are important! GPA is often a factor that determines your admission to the college of your choice.

NOTES

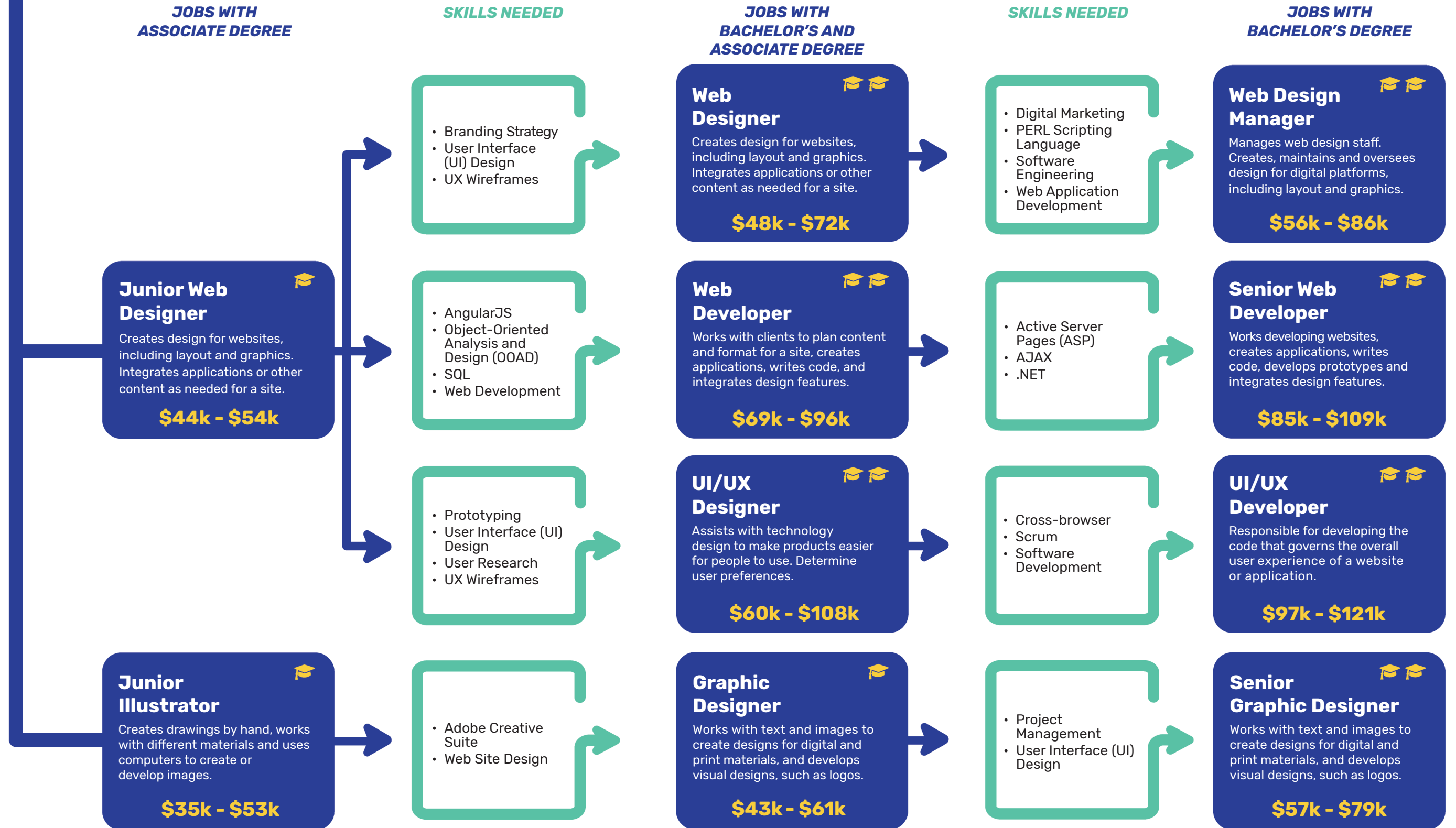
- The skills and jobs included in Career Maps highlight common professional requirements and career opportunities in New York City today. They are not exhaustive. Employer requirements vary by company and are subject to change. For further information, consult the Bronx Community College Office of Career Development at (718) 220-7546.
- Career Maps reflect data culled from over 850,000 online job postings in New York City over the course of a year. Salary ranges are estimates that are subject to change.
- Career Maps are produced by the Bronx Community College Office of Career Development and are made possible with the generous support of TD Bank through the TD Charitable Foundation.
- Designed by BCC students in the Bronx Community College Design Studio, David Ulloa '06, Creative Director.
- June 2019.

**BRONX
COMMUNITY
COLLEGE**

CAREER MAP

ELECTRONIC ENGINEERING TECHNOLOGY

Prepares graduates to join the workforce as technical professionals in a variety of industries and services or to transfer to a four-year baccalaureate program in engineering technology.



0 - 2 YEARS

2 - 5 YEARS

5 - 10 YEARS

CAREER MAPS

Demonstrate how degrees from Bronx Community College can lead to rewarding careers in New York City. They serve to help students make informed decisions about their studies and their professional futures. Career Maps showcase jobs available to Bronx Community College graduates and the additional skills graduates will need—either through on-the-job training or through the attainment of new degrees—in order to advance within a field.

INFORMATION

- For additional information about the Digital Design (AAS) program, contact Lisa Amowitz at lisa.amowitz@bcc.cuny.edu or **(718) 289-5344**.
- For additional information about career opportunities associated with the Digital Design (AAS) program, contact Alán Fuentes at alan.fuentes@bcc.cuny.edu or **(718) 933-1604**.
- Continuing your education: The Digital Design (AAS) articulates with Computer Arts & Design at Mercy College; Digital Arts-Multimedia and Graphic Arts at New York City College of Technology; the Arts, Cultural Studies, and Interdisciplinary Studies at SUNY Empire State; and Communications Technology at York College.
- Students are advised to complete PSY 11, Introduction to Psychology, as part of their Pathways / CUNY General Education elective.
- Be mindful that good grades are important! GPA is often a factor that determines your admission to the college of your choice.

NOTES

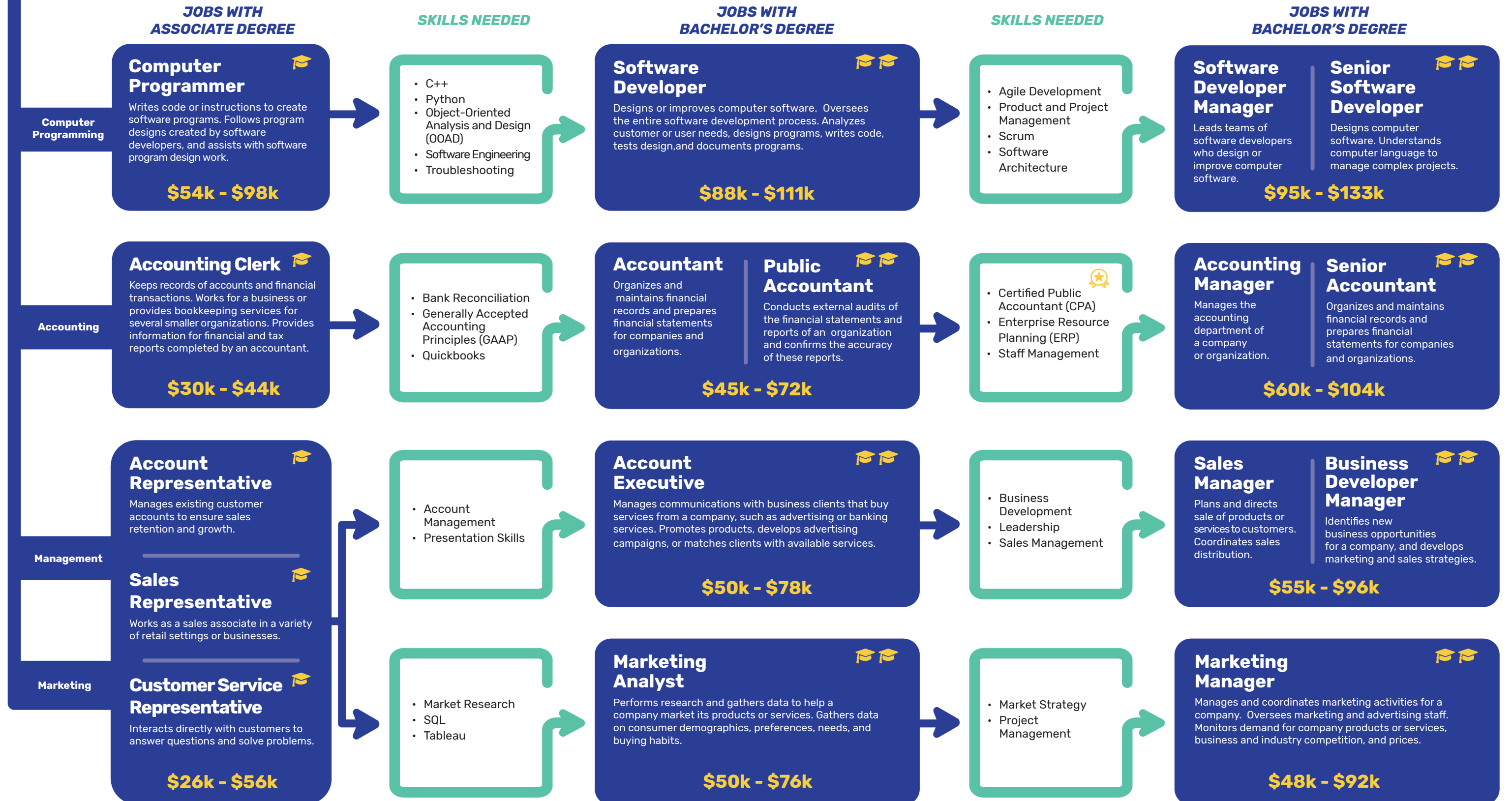
- The skills and jobs included in Career Maps highlight common professional requirements and career opportunities in New York City today. They are not exhaustive. Employer requirements vary by company and are subject to change. For further information, consult the Bronx Community College Office of Career Development at (718) 220-7546.
- Career Maps reflect data culled from over 850,000 online job postings in New York City over the course of a year. Salary ranges are estimates that are subject to change.
- Career Maps are produced by the Bronx Community College Office of Career Development and are made possible with the generous support of TD Bank through the TD Charitable Foundation.
- Designed by BCC students in the Bronx Community College Design Studio, David Ulloa '06, Creative Director.
- June 2019.

**BRONX
COMMUNITY
COLLEGE**

CAREER MAP

DIGITAL DESIGN

Prepares students for the field of digital art by providing a career oriented education. Through intensive training in visual foundations and state-of-the-art technology, students gain aesthetic awareness, problem-solving skills and the technical proficiency to pursue positions in visual communication.



0 - 2 YEARS

2 - 5 YEARS

5 - 10 YEARS

CAREER MAPS

Demonstrate how degrees from Bronx Community College can lead to rewarding careers in New York City. They serve to help students make informed decisions about their studies and their professional futures. Career Maps showcase jobs available to Bronx Community College graduates and the additional skills graduates will need—either through on-the-job training or through the attainment of new degrees—in order to advance within a field.

INFORMATION

- For additional information about the Business Administration (AS) program, please contact **business-program@bcc.cuny.edu** or **(718) 289-5594**.
- For additional information about career opportunities associated with the Business Administration (AS) program, contact Alán Fuentes at **alan.fuentes@bcc.cuny.edu** or **(718) 933-1604**.
- Continuing your education: The Business Administration (AS) articulates with Forensic Accounting at John Jay College; Business Administration, Health Services Administration, and Accounting at Lehman College; Entrepreneurship and General Business Administration at Universidad del Sagrado Corazon; Business, Management & Economics and Interdisciplinary Studies at SUNY Empire State; International Transportation and Trade at SUNY Maritime; and Business Administration at SUNY Potsdam.
- Students are advised to complete ECO 12, Macroeconomics, for the Pathways / CUNY General Education requirement; U.S. Experience In Its Diversity as well as ECO 11, Microeconomics, and COMM 11, Fundamentals of Interpersonal Communication for the Individual and Society requirement.
- Be mindful that good grades are important! GPA is often a factor that determines your admission to the college of your choice.

NOTES

- The skills and jobs included in Career Maps highlight common professional requirements and career opportunities in New York City today. They are not exhaustive. Employer requirements vary by company and are subject to change. For further information, consult the Bronx Community College Office of Career Development at (718) 220-7546.
- Career Maps reflect data culled from over 850,000 online job postings in New York City over the course of a year. Salary ranges are estimates that are subject to change.
- Career Maps are produced by the Bronx Community College Office of Career Development and are made possible with the generous support of TD Bank through the TD Charitable Foundation.
- Designed by BCC students in the Bronx Community College Design Studio, David Ulloa '06, Creative Director.
- June 2019.

**BRONX
COMMUNITY
COLLEGE**

CAREER MAP

BUSINESS ADMINISTRATION

Provides a broad foundation in business so that graduates may transfer to the third year of a senior college or pursue immediate employment. Students must select one option from among the Accounting, Computer Programming, Management and Marketing options.