

Data Bulletin

Office of Institutional
Effectiveness

February 2024



Table of Contents

Enrollment Profile: Fall 2023	1
Enrollment Profile: Fall 2019 – 2023	2
Enrollment by Race/Ethnicity: Fall 2019 – 2023	3
Total Headcount Enrollment: by Department: Fall 2019 – 2023	4
Student Headcount Enrollment: by Program and Department: Fall 2019 – 2023	5
New Student Enrollment: by Program and Department: Fall 2019 – 2023	8
FTEs Generated by Department	11
Special Program Population Enrollment.....	12
Application to Enrollment: First-time Freshmen and Transfers: Fall 2023	13
Degrees/Certificates Conferred: AY 2018-19 to 2022-23	14
Institutional Persistence Rates for First-time, Full-time Freshmen: Fall 2017 – 2022	15
Fall Headcount Enrollment: CUNY Community Colleges: Fall 2019 – 2023	16
One-year Institutional Retention Rates: CUNY Community Colleges: Fall 2018 – 2022	17
Three-Year Institution Graduation Rates: CUNY Community Colleges: Fall 2016 – 2020	18
Full-time Faculty Profile: Fall 2018 – 2022	19

Enrollment Profile

Fall 2023

Category	N	%	Category	N	%
Total Headcount	6,465				
Gender			Residency Status		
Women	3,626	56	Resident	6,128	95
Men	2,808	43	Non-Resident	337	5
Other	31	0.5			
Race/ Ethnicity			Degree Status		
Hispanic	3,334	52	Associates	5,651	87
Black	2,455	38	Certificate	115	2
Asian/Pacific Islander	271	4	Non-Degree	699	11
White	389	6			
Native American	16	0			
Geographical Location			Degree Pursued		
New York City	5,719	88	Certificate	115	2
Bronx	4,759	74	AA	1,783	28
Brooklyn	120	2	AS	1,651	26
Manhattan	673	10	AAS	2,217	34
Queens	130	2	Non-Degree	699	11
Richmond (Staten Island)	13	0			
Other NYC	24	0			
New York State	235	4	Full/Part Time Status		
Westchester	206	3	Full-Time	3,725	58
Other NYS	29	0	Part-Time	2,740	42
New Jersey	8	0			
Other/Unknow/Missing	503	8			
Type of Admission			Age Distribution		
First-Time Freshman	1,313	20	Under 20	2,280	35
Transfer	581	9	20-22	1,578	24
Readmit	793	12	23-24	587	9
Continuing Degree	3,075	48	25-29	787	12
College Now	521	8	30-44	989	15
Early College Initiative	94	1	45 and over	244	4
First-time Non-Degree	59	1			
Continuing Non-Degree	16	0			
Non-Degree Readmit	9	0			
Unknown	4	0			

Source.

BCC Office of Institutional Effectiveness

Enrollment Profile

Fall 2019 - 2023

	2019	2020	2021	2022	2023
Total Headcount	10,040	8,370	7,265	6,715	6,465
Race/ Ethnicity					
Hispanic	5,909	4,861	4,091	3,519	3,334
Black	3,449	2,913	2,591	2,641	2,455
Asian/Pacific Islander	375	336	306	295	271
White	282	236	257	247	389
Native American	25	24	20	13	16
Age Distribution					
Under 25	7,097	5,796	4,952	4,620	4,445
25 and Over	2,943	2,574	2,313	2,095	2,020
Full/Part Time Status					
Full-time	6,191	5,592	4,493	3,839	3,725
Part-time	3,849	2,778	2,772	2,876	2,740
Gender					
Women	5,653	4,950	4,323	3,877	3,626
Men	4,387	3,420	2,942	2,826	2,808
Other Gender / Unknown	0	0	0	12	31
Degree Status					
Degree	8,907	7,743	6,602	6,069	5,766
Non-Degree	1,133	627	663	646	699
Residency Status					
Resident	9,778	8,019	6,733	6,281	6,128
Nonresident	262	351	532	434	337
Type of Admission					
First-Time	1,989	1,590	1,403	1,312	1,313
Transfer	757	449	480	541	581
Readmit	743	579	502	545	793
Continuing Degree	5,412	5,108	4,215	3,644	3,075
College Now	867	431	490	480	521
Early College Initiative	103	82	66	87	94
First-time Non-Degree	130	76	71	47	59
Continuing Non-Degree	29	35	36	30	16
Non-Degree Readmit	3	2	0	2	9
Unknown	7	18	2	27	4

Source.

BCC Office of Institutional Effectiveness

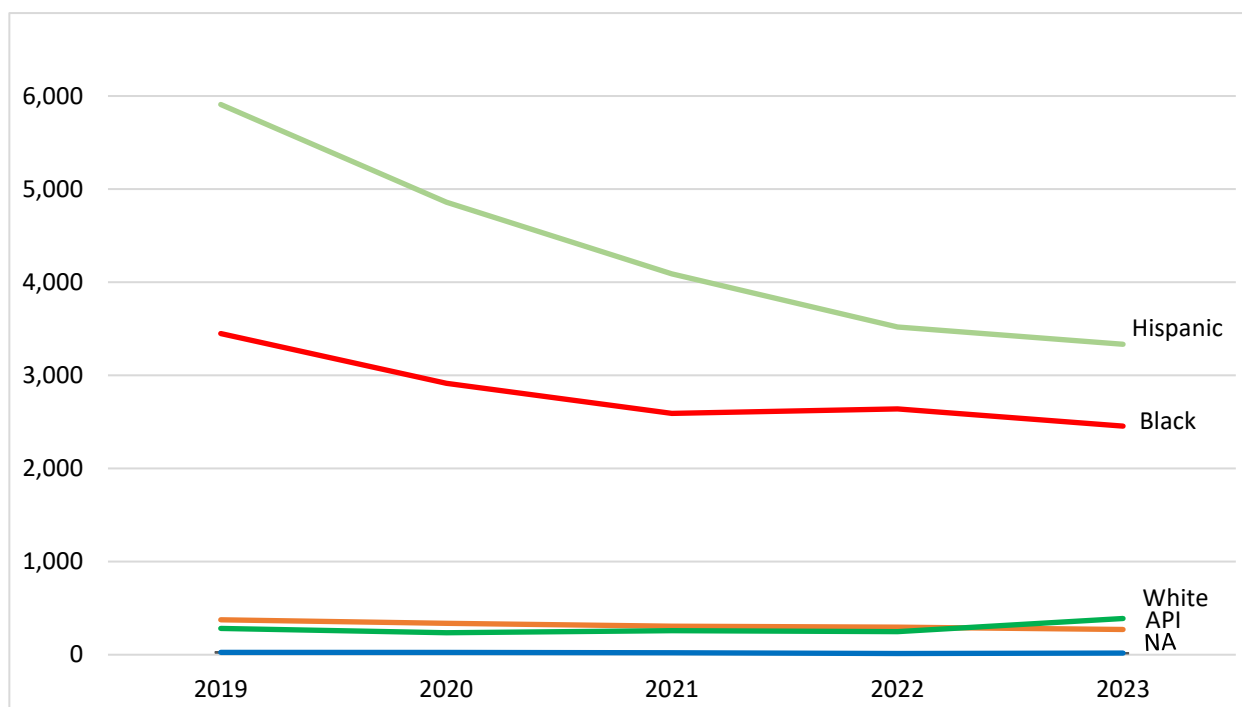
Enrollment by Race/Ethnicity Fall 2019 - 2023

Headcount

Race/Ethnicity	2019	2020	2021	2022	2023	Change	
						N	%
Native American	25	24	20	13	16	-9	-36.0
Asian/Pacific Islander	375	336	306	295	271	-104	-27.7
Black	3,449	2,913	2,591	2,641	2,455	-994	-28.8
Hispanic	5,909	4,861	4,091	3,519	3,334	-2,575	-43.6
White	282	236	257	247	389	107	37.9
Total	10,040	8,370	7,265	6,715	6,465	-3,575	-35.6

Percentage

Race/Ethnicity	2019	2020	2021	2022	2023	Change	
						Ppt.	
Native American	0.2	0.3	0.3	0.2	0.2	0.0	
Asian/Pacific Islander	3.7	4.0	4.2	4.4	4.2	0.5	
Black	34.4	34.8	35.7	39.3	38.0	3.6	
Hispanic	58.9	58.1	56.3	52.4	51.6	-7.3	
White	2.8	2.8	3.5	3.7	6.0	3.2	
Total	100.0	100.0	100.0	100.0	100.0		



Source.
CUNY Student Data Book

**Total Headcount Enrollment
by Department
Fall 2019 - 2023**

Department	2019	2020	2021	2022	2023	Change	
						N	%
Art & Music	241	218	171	193	173	-68	-28.2
Biological Sciences	429	415	404	386	393	-36	-8.4
Business & Information Systems	1,282	1,111	1,071	942	820	-462	-36.0
Chemistry, Earth Sciences & Environmental Sciences	151	120	87	57	75	-76	-50.3
Communication Arts & Sciences	222	188	171	144	141	-81	-36.5
Education & Academic Literacy	549	459	390	366	394	-155	-28.2
Engineering, Physics & Technology	626	584	560	563	687	61	9.7
English	56	54	49	53	45	-11	-19.6
Health, Physical Ed. & Recreation	684	530	395	343	322	-362	-52.9
History	40	35	27	19	18	-22	-55.0
Interdepartmental	1,444	1,108	850	779	566	-878	-60.8
Mathematics & Computer Science	314	298	281	319	295	-19	-6.1
Nursing and Allied Health Sciences	758	796	753	761	882	124	16.4
Social Sciences	2,098	1,820	1,385	1,132	949	-1,149	-54.8
World Languages and Cultures	9	8	9	11	8	-1	-11.1
Unaffiliated	1,137	626	662	647	697	-440	-38.7

Source.

BCC Office of Institutional Effectiveness

**Student Enrollment
by Program and Department
Fall 2019 - 2023**

Department/Program/Subplan (Concentration)	2019	2020	2021	2022	2023	Change	
						N	%
Art & Music	241	218	171	193	173	-68	-28.2
Digital Arts AAS	215	149	64	20	5	-210	-97.7
<i>Graphic Design</i>	215	149	64	20	5	-210	-97.7
Digital Design	0	38	68	122	125	125	•••
<i>None</i>	0	0	68	122	125	125	•••
Liberal Arts and Sciences AA	26	31	39	51	43	17	65.4
<i>Studio Art</i>	26	31	39	51	43	17	65.4
Biological Sciences	429	415	404	386	393	-36	-8.4
Animal Care & Management CERT	39	53	50	53	54	15	38.5
Biotechnology AS	29	28	25	15	19	-10	-34.5
Medical Laboratory Technician AAS	116	116	141	137	164	48	41.4
Horticulture AAS	23	22	31	25	14	-9	-39.1
<i>None</i>	22	21	29	24	13	-9	-40.9
<i>General Horticulture</i>	1	1	2	1	1	0	0.0
Science	222	196	157	156	142	-80	-36.0
<i>Biology</i>	222	196	157	156	142	-80	-36.0
Business & Information Systems	1,282	1,111	1,071	942	820	-462	-36.0
Accounting AAS	75	55	74	61	56	-19	-25.3
Business Administration AS	828	748	694	619	521	-307	-37.1
<i>Accounting</i>	217	177	160	122	105	-112	-51.6
<i>Computer Programming</i>	49	52	41	39	32	-17	-34.7
<i>Management</i>	373	369	333	295	257	-116	-31.1
<i>Marketing</i>	142	130	149	145	120	-22	-15.5
<i>None</i>	0	0	0	0	7	7	•••
Computer Information Systems AAS	172	149	121	102	96	-76	-44.2
<i>None</i>	21	10	37	66	71	50	238.1
<i>Computer Programming</i>	135	118	76	33	24	-111	-82.2
<i>Web Page Development</i>	16	21	8	3	1	-15	-93.8
Marketing Management AAS	36	24	26	18	29	-7	-19.4
Medical Office Assistant AAS	87	72	98	93	76	-11	-12.6
Office Administration & Technology AAS	22	17	19	11	9	-13	-59.1
Paralegal Studies CERT	5	1	5	5	7	2	40.0
Paralegal/Legal Studies AAS	57	45	34	33	26	-31	-54.4
<i>None</i>	15	9	7	11	3	-12	-80.0
<i>Paralegal and Legal Studies</i>	38	34	23	19	20	-18	-47.4
<i>Lay Advocate</i>	4	2	4	3	3	-1	-25.0
Chemistry, Earth Sciences, & Environ. Sciences	151	120	87	57	75	-76	-50.3
Science for Forensics AS	52	48	39	21	31	-21	-40.4
Science	95	72	46	34	44	-51	-53.7
<i>Chemistry</i>	79	61	36	23	32	-47	-59.5
<i>Earth Systems & Environmental Science</i>	16	11	10	11	12	-4	-25.0
Environmental Technology AAS	0	0	2	2	0	0	•••
Pharmaceutical Manufacturing Technology AAS	4	0	0	0	0	-4	-100.0
Communication Arts & Sciences	222	188	171	144	141	-81	-36.5
Liberal Arts and Sciences AA	126	112	105	80	65	-61	-48.4
<i>Media Studies</i>	43	43	40	22	19	-24	-55.8
<i>Performing Arts</i>	53	32	32	31	26	-27	-50.9
<i>Speech Pathology</i>	30	37	33	27	20	-10	-33.3
Media and Digital Film Prod AS	96	76	66	64	76	-20	-20.8

Student Enrollment
Trends by Program and Department (cont'd)
 Fall 2019 - 2023

Department/Program/Subplan (Concentration)	2019	2020	2021	2022	2023	Change	
						N	%
Education & Academic Literacy	549	459	390	366	394	-155	-28.2
Asst Child Special Needs CERT	5	5	2	3	3	-2	-40.0
Education Associate AAS	61	79	67	51	19	-42	-68.9
<i>None</i>	58	75	66	47	16	-42	-72.4
<i>Child Care</i>	3	4	1	4	3	0	0.0
Liberal Arts and Sciences AA	478	367	284	249	192	-286	-59.8
<i>Early Childhood and Child Educ</i>	427	328	252	220	166	-261	-61.1
<i>Secondary Education</i>	51	39	32	29	26	-25	-49.0
Early Childhood Assistant and Bilingual CERT	5	8	9	14	14	9	180.0
Education	0	0	28	49	166	166	•••
<i>None</i>	0	0	3	3	2	2	•••
<i>Childhood</i>	0	0	8	13	56	56	•••
<i>Early Childhood</i>	0	0	17	33	108	108	•••
Engineering, Physics & Technology	626	584	560	563	687	61	9.7
Automotive Tech AAS	203	183	184	173	222	19	9.4
<i>Automotive Technology</i>	199	179	180	171	206	7	3.5
<i>Diesel Technology</i>	4	4	4	2	1	-3	-75.0
<i>Electric Vehicle</i>	0	0	0	0	15	15	•••
Automotive Technician CERT	23	13	14	18	28	5	21.7
Cybersecurity and Networking AAS	90	98	95	110	187	97	107.8
Electronic Engineer Tech AAS	101	95	91	88	97	-4	-4.0
Engineering Science AS	135	122	96	90	69	-66	-48.9
Nuclear Medicine Technology AAS	58	65	71	73	72	14	24.1
Science	16	8	6	6	5	-11	-68.8
<i>Physics</i>	16	8	6	6	5	-11	-68.8
Cybersecurity & Net CERT	0	0	3	5	7	7	•••
Telecommunications Tech AAS	0	0	0	0	0	0	•••
English	56	54	49	53	45	-11	-19.6
English AA	56	54	49	53	45	-11	-19.6
Health, Physical Ed. & Recreation	684	530	395	343	322	-362	-52.9
Dietetics & Nutri Science AS	376	307	203	171	130	-246	-65.4
Exercise Science & Kinesiology	111	81	82	81	80	-31	-27.9
Health Sciences	0	0	0	0	36	36	•••
Public Health AS	101	89	64	56	40	-61	-60.4
Therapeutic Recreation AS	96	53	46	35	36	-60	-62.5
History	40	35	27	19	18	-22	-55.0
Liberal Arts and Sciences AA	40	35	27	19	18	-22	-55.0
<i>History</i>	40	35	27	19	18	-22	-55.0
Interdepartmental	1,444	1,108	850	779	566	-878	-60.8
Liberal Arts and Sciences AA	1,428	1,099	844	775	560	-868	-60.8
<i>None</i>	37	39	39	39	14	-23	-62.2
<i>Liberal Arts & Sciences: General</i>	1,391	1,060	805	736	546	-845	-60.7
Science	16	9	6	4	6	-10	-62.5
Mathematics & Computer Sci.	314	298	281	319	295	-19	-6.1
Computer Science AS	286	267	256	289	275	-11	-3.8
Mathematics AS	28	31	25	30	20	-8	-28.6

Student Enrollment
Trends by Program and Department (cont'd)
 Fall 2019 - 2023

Department/Program/Subplan (Concentration)	2019	2020	2021	2022	2023	Change	
						N	%
Nursing and Allied Health Sciences	758	796	753	761	882	124	16.4
Licensed Practical Nurse CERT	8	1	13	48	1	-7	-87.5
Nursing AAS	559	608	544	506	656	97	17.4
<i>None</i>	496	519	513	473	565	69	13.9
<i>Nursing Clinical</i>	56	79	22	27	79	23	41.1
<i>Nursing Second Degree</i>	7	10	9	6	12	5	71.4
Radiologic Tech AAS	191	187	196	207	225	34	17.8
Social Sciences	2,098	1,820	1,385	1,132	949	-1,149	-54.8
Criminal Justice AA	1,055	897	637	485	393	-662	-62.7
Human Services AAS	219	203	172	137	121	-98	-44.7
Liberal Arts and Sciences AA	824	720	576	510	435	-389	-47.2
<i>Black and Latinx Studies</i>	0	0	0	1	3	3	•••
<i>Human Services</i>	252	211	145	112	89	-163	-64.7
<i>International Studies</i>	1	1	0	1	0	-1	-100.0
<i>Political Science</i>	47	37	34	24	26	-21	-44.7
<i>Psychology</i>	481	432	374	344	291	-190	-39.5
<i>Sociology</i>	43	39	23	28	26	-17	-39.5
World Languages and Cultures	9	8	9	11	8	-1	-11.1
Liberal Arts and Sciences AA	9	8	9	11	8	-1	-11.1
<i>Spanish</i>	9	8	9	11	8	-1	-11.1

Source.

BCC Office of Institutional Effectiveness

New Student Enrollment
Trends by Program and Department
 Fall 2019 - 2023

Department/Program/Subplan (Concentration)	2019	2020	2021	2022	2023	Change	
						N	%
Art & Music	72	29	35	67	63	-9	-12.5
Digital Arts AAS	3	1	1	0	0	-3	-100.0
<i>Web Design</i>	3	1	1	0	0	-3	-100.0
Digital Design	56	18	20	42	45	-11	-19.6
Liberal Arts and Sciences AA	13	10	14	25	18	5	38.5
<i>Studio Art</i>	13	10	14	25	18	5	38.5
Biological Sciences	135	126	118	108	117	-18	-13.3
Animal Care & Management CERT	21	27	26	26	23	2	9.5
Biotechnology AS	14	8	3	2	4	-10	-71.4
Horticulture AAS	6	5	12	3	0	-6	-100.0
Medical Laboratory Tech AAS	2	29	31	28	48	46	2300.0
Science	92	57	46	49	42	-50	-54.3
<i>Biology</i>	92	57	46	49	42	-50	-54.3
Business & Information Systems	367	314	306	300	269	-98	-26.7
Accounting AAS	27	15	28	16	13	-14	-51.9
Business Administration AS	252	228	204	217	191	-61	-24.2
<i>None</i>	21	8	2	4	0	-21	-100.0
<i>Accounting</i>	52	47	37	32	42	-10	-19.2
<i>Computer Programming</i>	1	14	6	12	10	9	900.0
<i>Management</i>	125	110	103	104	95	-30	-24.0
<i>Marketing</i>	53	49	56	65	44	-9	-17.0
Computer Information Systems AAS	40	41	29	25	22	-18	-45.0
<i>None</i>	1	5	18	23	22	21	2,100.0
<i>Computer Programming</i>	36	30	11	2	0	-36	-100.0
<i>Web Page Development</i>	3	6	0	0	0	-3	-100.0
Marketing Management AAS	8	8	9	6	19	11	137.5
Medical Office Assistant AAS	24	12	23	22	16	-8	-33.3
Office Administration & Technology AAS	6	3	4	2	1	-5	-83.3
Paralegal Studies CERT	3	1	3	2	4	1	33.3
Paralegal/Legal Studies AAS	7	6	6	10	3	-4	-57.1
<i>Paralegal Studies</i>	7	6	6	10	3	-4	-57.1
Chemistry, Earth Sciences & Environ. Sciences	53	30	26	18	27	-26	-49.1
Environmental Technology AAS	0	0	0	0	0	0	•••
Science	29	12	13	15	12	-17	-58.6
<i>Chemistry</i>	23	8	8	8	9	-14	-60.9
<i>Earth Systems & Environmental Science</i>	6	4	5	7	3	-3	-50.0
Science for Forensics AS	24	18	13	3	15	-9	-37.5
Communication Arts & Sciences	72	41	50	48	35	-37	-51.4
Liberal Arts and Sciences AA	39	22	29	22	13	-26	-66.7
<i>Media Studies</i>	12	7	7	2	3	-9	-75.0
<i>Performing Arts</i>	18	7	13	15	9	-9	-50.0
<i>Speech Pathology</i>	9	8	9	5	1	-8	-88.9
Media and Digital Film Prod AS	33	19	21	26	22	-11	-33.3

New Student Enrollment
Trends by Program and Department (cont'd)
 Fall 2019 - 2023

Department/Program/Subplan (Concentration)	2019	2020	2021	2022	2023	Change	
						N	%
Education & Academic Literacy	119	109	75	84	129	10	8.4
Asst Child Special Needs CERT	3	2	1	2	1	-2	-66.7
Bilingual Early childhood Asst CERT	0	3	2	0	3	3	•••
Early Childhood Assistant and Bilingual CERT	1	9	4	3	6	5	500.0
Education Associate AAS	12	18	6	2	2	-10	-83.3
Education	0	0	25	25	86	86	•••
<i>Childhood</i>	0	0	7	9	28	28	•••
<i>Early Childhood</i>	0	0	18	16	58	58	•••
Liberal Arts and Sciences AA	103	77	37	52	31	-72	-69.9
<i>Early Childhood and Child Educ</i>	91	69	29	42	23	-68	-74.7
<i>Secondary Education</i>	12	8	8	10	8	-4	-33.3
Engineering, Physics & Technology	204	158	213	208	268	64	31.4
Automotive Technology AAS	71	63	90	78	105	34	47.9
<i>Automotive Technology</i>	70	63	87	78	91	21	30.0
<i>Diesel Technology</i>	1	0	3	0	0	-1	-100.0
<i>Electric Vehicles</i>	0	0	0	0	14	14	•••
Automotive Technician CERT	12	5	9	10	15	3	25.0
Cybersecurity and Networking AAS	37	12	29	34	70	33	89.2
Cybersecurity & Networking CERT	1	0	2	3	4	3	300.0
Electronic Engineer Technology AAS	27	27	44	36	36	9	33.3
Engineering Science AS	41	38	27	32	23	-18	-43.9
Nuclear Medicine Tech AAS	7	12	10	12	14	7	100.0
Science	8	1	2	3	1	-7	-87.5
<i>Physics</i>	8	1	2	3	1	-7	-87.5
English	24	15	17	15	10	-14	-58.3
English AA	24	15	17	15	10	-14	-58.3
Health, Physical Education & Recreation	104	66	70	47	66	-38	-36.5
Dietetics & Nutrition Science AS	48	28	24	15	11	-37	-77.1
Exercise Science & Kinesiology	34	20	24	19	27	-7	-20.6
Health Sciences	0	0	0	0	13	13	•••
Public Health AS	9	13	11	9	6	-3	-33.3
Therapeutic Recreation AS	13	5	11	4	9	-4	-30.8
History	3	9	7	7	4	1	33.3
Liberal Arts and Science AA	3	9	7	7	4	1	33.3
<i>History</i>	13	9	7	7	4	-9	-69.2
Interdepartmental	525	291	226	241	145	-380	-72.4
Liberal Arts and Sciences AA	519	289	224	240	145	-374	-72.1
<i>None</i>	24	13	22	22	7	-17	-70.8
<i>Liberal Arts & Sciences: General</i>	495	276	202	218	138	-357	-72.1
Science	6	2	2	1	0	-6	-100.0
Mathematics & Computer Science	119	88	90	116	110	-9	-7.6
Computer Science AS	111	78	84	103	106	-5	-4.5
Mathematics AS	8	10	6	13	4	-4	-50.0

New Student Enrollment
Trends by Program and Department (cont'd)
 Fall 2019 - 2023

Department/Program/Subplan (Concentration)	2019	2020	2021	2022	2023	Change	
						N	%
Nursing and Allied Health Sciences	294	293	329	342	379	85	28.9
Licensed Practical Nurse CERT	1	0	12	40	1	0	0.0
Nursing AAS	233	233	234	217	279	46	19.7
<i>Nursing Second Degree</i>	2	3	3	0	6	4	200.0
<i>None</i>	231	230	231	217	273	42	18.2
Radiology Tech AAS	60	60	83	85	99	39	65.0
Social Sciences	611	434	318	249	270	-341	-55.8
Criminal Justice AA	336	238	157	123	112	-224	-66.7
Human Services AAS	50	29	14	19	42	-8	-16.0
Liberal Arts and Sciences AA	225	167	147	107	116	-109	-48.4
<i>Black and Latinx Studies</i>	0	0	0	1	2	2	•••
<i>Human Services</i>	55	44	40	18	13	-42	-76.4
<i>Political Science</i>	13	7	7	7	6	-7	-53.8
<i>Psychology</i>	146	105	92	76	89	-57	-39.0
<i>Sociology</i>	11	11	8	5	6	-5	-45.5
World Languages and Cultures	2	3	3	2	2	0	0.0
Liberal Arts and Sciences AA	2	3	3	2	2	0	0.0
<i>Spanish</i>	2	3	3	2	2	0	0.0

Note.
 Includes first-time freshmen and incoming transfer students.

Source.
 BCC Office of Institutional Effectiveness

FTEs Generated by Department
Fall 2019 - 2023

Department	2019	2020	2021	2022	2023
Art & Music	474	399	331	298	267
Biological Sciences	443	453	427	382	334
Business & Information Systems	424	396	318	288	244
Chemistry, Earth & Environmental Sciences	226	293	182	144	207
Communication Arts & Sciences	433	376	288	278	265
Education & Academic Literacy	107	103	81	80	90
Engineering, Physics & Technology	235	240	177	183	218
English	773	676	601	524	553
Freshman Year Programs	88	74	54	53	45
Health, Physical Education & Recreation	306	250	196	179	149
History	370	295	271	239	198
Mathematics & Computer Science	552	493	433	551	538
Nursing and Allied Health Sciences	116	128	75	80	104
Social Sciences	1,147	1,053	760	703	577
World Languages and Cultures	207	177	141	102	95
Total	5,901	5,406	4,335	4,082	3,884

Percentage of FTEs Generated by Department
Fall 2019 - 2023

Department	2019	2020	2021	2022	2023
Art & Music	8.0	7.4	7.6	7.3	6.9
Biological Sciences	7.5	8.4	9.9	9.3	8.6
Business & Information Systems	7.2	7.3	7.3	7.1	6.3
Chemistry, Earth & Environmental Sciences	3.8	5.4	4.2	3.5	5.3
Communication Arts & Sciences	7.3	7.0	6.6	6.8	6.8
Education & Academic Literacy	1.8	1.9	1.9	2.0	2.3
Engineering, Physics & Technology	4.0	4.4	4.1	4.5	5.6
English	13.1	12.5	13.9	12.8	14.2
Freshman Year Programs	1.5	1.4	1.2	1.3	1.2
Health, Physical Education & Recreation	5.2	4.6	4.5	4.4	3.8
History	6.3	5.5	6.3	5.8	5.1
Mathematics & Computer Science	9.4	9.1	10.0	13.5	13.9
Nursing and Allied Health Sciences	2.0	2.4	1.7	2.0	2.7
Social Sciences	19.4	19.5	17.5	17.2	14.9
World Languages and Cultures	3.5	3.3	3.3	2.5	2.4
Total	100.0	100.0	100.0	100.0	100.0

Notes.

FTE = sum of credits / 15.

Includes degree credits.

Source.

BCC Office of Institutional Effectiveness

Special Program Population Enrollment
Fall 2019 - 2023

	2019	2020	2021	2022	2023	Change	
						N	%
ASAP	3,772	3,265	2,625	2,189	2,223	-1,549	-41.1
CLIP	249	190	154	121	142	-107	-43.0
College Discovery	399	335	282	282	296	-103	-25.8
College Now	867	431	490	480	521	-346	-39.9
CUNY Start	20	101	112	63	59	39	195.0
Early College Initiative	103	82	66	87	94	-9	-8.7
English Start	0	0	0	25	15	15	...
Future Now	260	330	236	298	249	-11	-4.2
Math Start	0	20	15	16	18	18	...

Notes.

ASAP: Accelerated Study in Associate Programs.

College Discovery: Educational Opportunity Program for community college students.

CLIP: CUNY Language Immersion Program, Intensive program.

College Now: For students meeting high school graduation requirements and preparing for in college.

CUNY Start- CUNY program that help students prepare for college-level coursework.

Early College Initiative: High school students can earn college credit and graduate with an Associate Degree.

English Start: Accelerated program to increase developmental needs in reading and writing.

Future Now: Prepares students for TASC exam, enroll in college, and graduate.

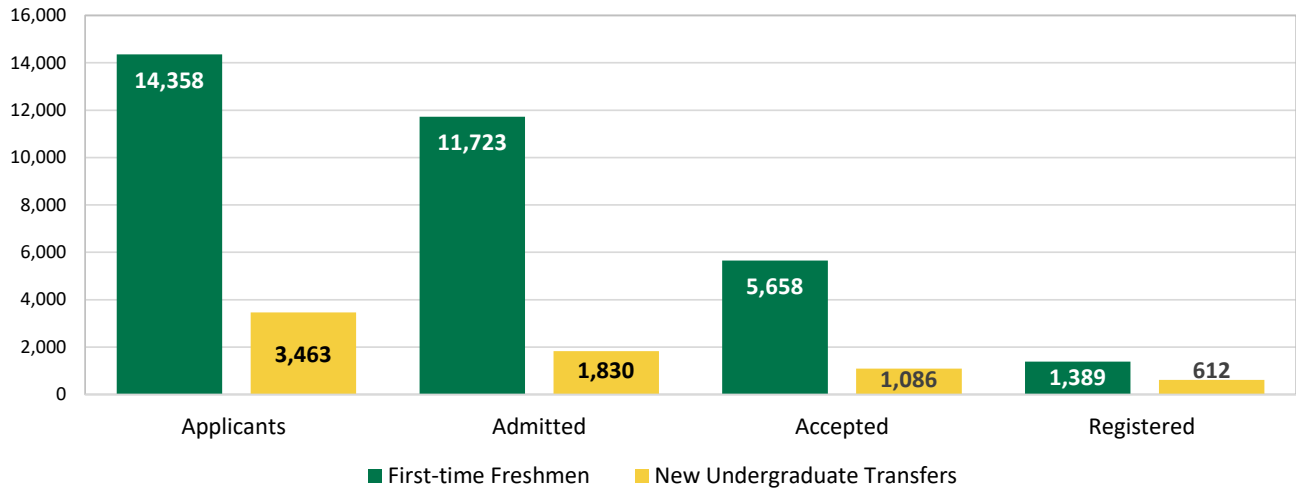
Math Start: CUNY program that helps associate degree seeking students get strong start in college.

Source.

BCC Office of Institutional Effectiveness

Application to Enrollment First-time Freshmen & Transfers
Fall 2023

	Applicants	Admitted	Accepted	Registered	Accepted % of Admitted	Registered % of Accepted
First-time Freshmen	14,358	11,723	5,658	1,389	48.3	24.5
New Undergraduate Transfers	3,463	1,830	1,086	612	59.3	56.4
Total	17,821	13,553	6,744	2,001	37.8	29.7



Notes.

Applicant: Prospective student applied as a new or incoming transfer student.

Admitted: Applicant has been offered admission.

Accepted: Students who have received an offer of admission and have accepted the offer.

Registered: Matriculated student.

Figures are unofficial.

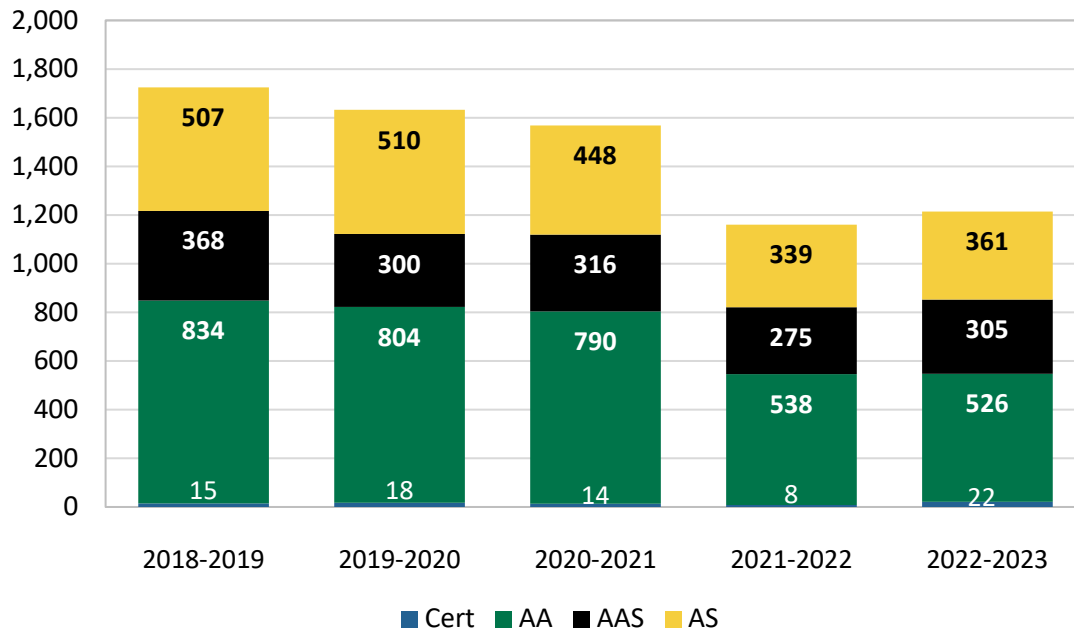
Source.

CUNY Application to Enrollment Report (extracted September 2023)

Degrees/Certificates Granted

AY 2018-19 to 2022-23

Academic Year	AA	AAS	AS	Cert	Total
2018-2019	834	368	507	15	1,724
2019-2020	804	300	510	18	1,632
2020-2021	790	316	448	14	1,568
2021-2022	538	275	339	8	1,160
2022-2023	526	305	361	22	1,214



Source.
CUNY Student Data Book

**Institutional Persistence Rates for First-time, Full-time Freshmen
Enrolled in Associate Degree Program
Fall 2017 - 2022**

Fall Cohort	Headcount (N)	Outcome	One					
			Semester	1 Year	2 Year	3 Year	4 Year	5 Year
2017	1,889	*Retention	76.7	54.9	34.8	11.6	5.4	3.5
		**Graduation		0.0	4.3	19.5	24.5	26.4
		***Persistence		54.8	39.1	31.1	29.9	29.9
2018	1,832		75.1	55.8	31.7	11.7	6.8	
				0.0	8.1	21.9	25.7	
				55.8	39.8	33.7	32.4	
2019	1,758		77.2	59.8	32.8	14.1		
				0.0	8.4	21.2		
				59.8	41.2	35.3		
2020	1,438		66.4	51.8	30.5			
				0.0	6.5			
				51.8	37.0			
2021	1,206		70.6	53.9				
				0.0				
				53.9				
2022	1,069		78.2	54.3				
				0.0				
				54.3				

Notes.

Sum may not equal total due to rounding.

***Institution Retention Rates** are calculated as percentage who are still enrolled at the college of entry in fall term and have not earned the degree pursued.

****Institutional Graduation Rates** are calculated as the percentage earning the degree pursued at the college the entered.

*****Institutional Persistence Rates** are the sum of the institution retention of the institutional graduation rates.

Source.

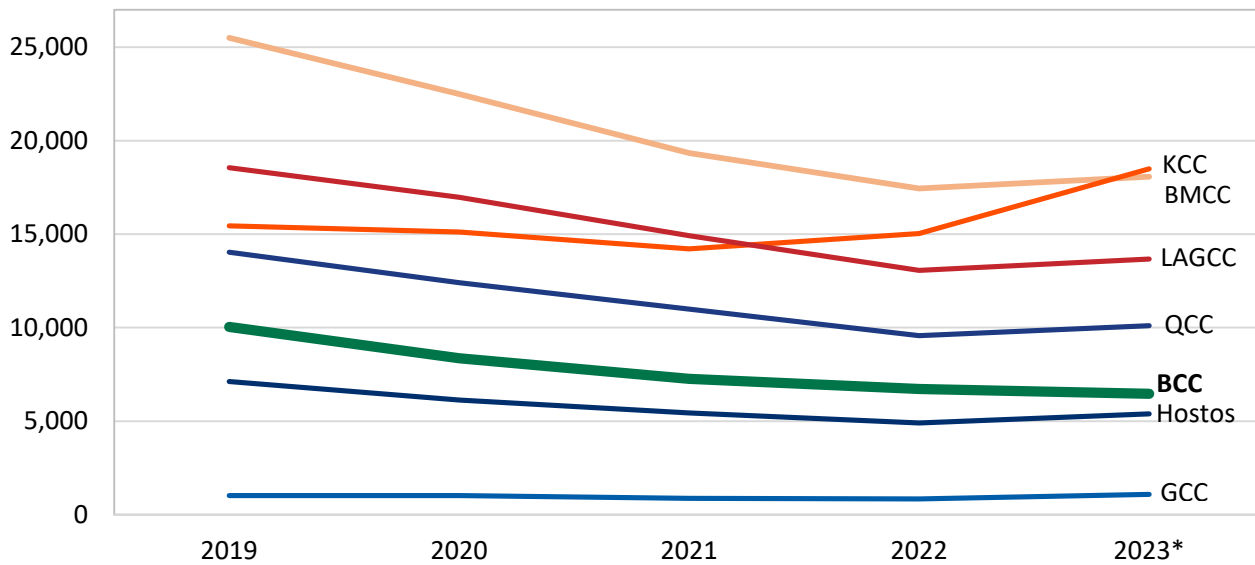
CUNY Student Data Book

CUNY Undergraduate Retention Rates

**Fall Headcount Enrollment
CUNY Community Colleges
Fall 2019 - 2023**

College	2019	2020	2021	2022	2023*	Five-year Change	
						N	%
BMCC	25,500	22,496	19,336	17,444	18,077	-7,423	-29.1
Bronx	10,040	8,370	7,265	6,715	6,465	-3,575	-35.6
Guttman	1,022	1,021	867	842	1,086	64	6.3
Hostos	7,120	6,136	5,441	4,904	5,396	-1,724	-24.2
Kingsborough	15,443	15,116	14,214	15,042	18,495	3,052	19.8
LaGuardia	18,555	16,971	14,919	13,064	13,668	-4,887	-26.3
Queensborough	14,035	12,405	10,989	9,573	10,112	-3,923	-28.0
Community Total	91,715	82,515	73,031	67,584	73,299	-18,416	-20.1

*Preliminary



Note.

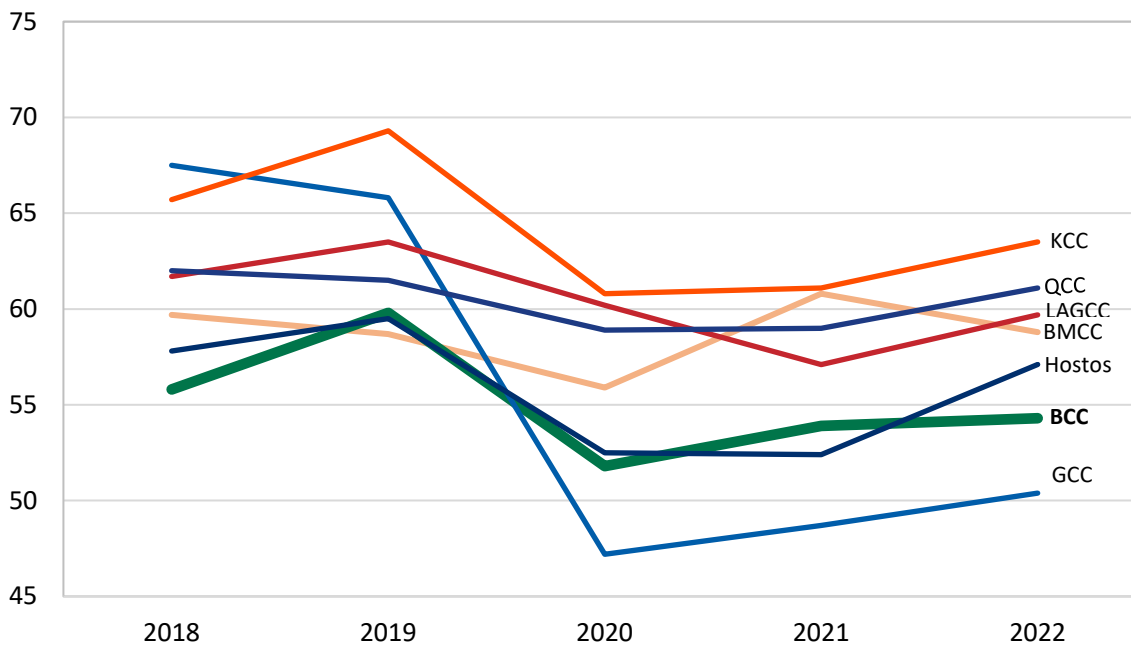
* With the exception of BCC, the figures for the other colleges are unofficial.

Source.

CUNY Student Data Book

One-Year Institution Retention Rates
First-time, Full-time Freshmen
CUNY Community Colleges
 Fall 2018 - 2022

College	2018	2019	2020	2021	2022	Change Ppt.
BMCC	59.7	58.7	55.9	60.8	58.8	-0.9
Bronx	55.8	59.8	51.8	53.9	54.3	-1.5
Guttman	67.5	65.8	47.2	48.7	50.4	-17.1
Hostos	57.8	59.5	52.5	52.4	57.1	-0.7
Kingsborough	65.7	69.3	60.8	61.1	63.5	-2.2
LaGuardia	61.7	63.5	60.2	57.1	59.7	-2.0
Queensborough	62.0	61.5	58.9	59.0	61.1	-0.9



Note.

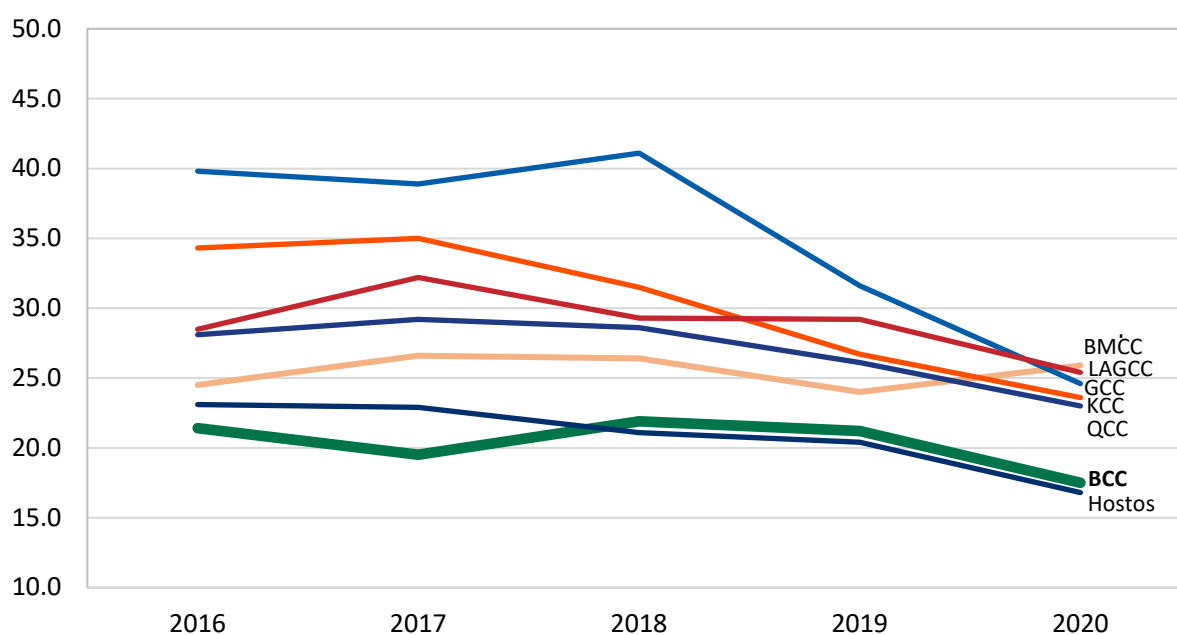
Institution retention rates are calculated as percentage of students who re-enroll at the same college in the subsequent fall term.

Source.

CUNY Student Data Book
 CUNY UG Retention Rates

Three-Year Institution Graduation Rates
First-time, Full-time Freshmen
CUNY Community Colleges
 Fall 2016 - 2020

College	2016	2017	2018	2019	2020	Change Ppt.
BMCC	24.5	26.6	26.4	24.0	25.9	1.4
Bronx	21.4	19.5	21.9	21.2	17.5	-3.9
Guttman	39.8	38.9	41.1	31.6	24.6	-15.2
Hostos	23.1	22.9	21.1	20.4	16.8	-6.3
Kingsborough	34.3	35.0	31.5	26.7	23.6	-10.7
LaGuardia	28.5	32.2	29.3	29.2	25.4	-3.1
Queensborough	28.1	29.2	28.6	26.1	23.0	-5.1



Note.

Institution Graduation Rates are calculated as percentage earning the degree pursued or higher degree at the college of entry any time prior to the start of the subsequent fall term(s).

Source.

CUNY Student Data Book
 CUNY UG Graduation Rates

Full-time Faculty Profile

Fall 2018 - 2022

	2018		2019		2020		2021		2022		Change	
	N	%	N	%	N	%	N	%	N	%	N	%
Total	301		283		260		253		251		-50	-16.6
Academic Rank												
Professors	85	28.2	81	28.6	77	29.6	76	30.0	79	31.5	-6	-7.1
Associate Professors	67	22.3	71	25.1	86	33.1	86	34.0	79	31.5	12	17.9
Assistant Professors	100	33.2	90	31.8	59	22.7	54	21.3	47	18.7	-53	-53.0
Instructors	2	0.7	0	0.0	0	0.0	0	0.0	2	0.8	0	0.0
Lecturers	47	15.6	41	14.5	38	14.6	37	14.6	44	17.5	-3	-6.4
Gender												
Female	140	46.5	134	47.3	120	46.2	116	45.8	116	46.2	-24	-17.1
Male	161	53.5	149	52.7	140	53.8	137	54.2	135	53.8	-26	-16.1
Race/Ethnicity												
Asian	29	9.6	29	10.2	29	11.2	29	11.5	29	11.6	0	0.0
Black	50	16.6	45	15.9	36	13.8	37	14.6	41	16.3	-9	-18.0
Hispanic	47	15.6	42	14.8	37	14.2	38	15.0	38	15.1	-9	-19.1
White	150	49.8	144	50.9	138	53.1	131	51.8	126	50.2	-24	-16.0
Non-Resident	18	6.0	17	6.0	15	5.8	13	5.1	13	5.2	-5	-27.8
Other	7	2.3	6	2.1	5	1.9	5	2.0	4	1.6	-3	-42.9
Tenure Status												
Tenure	180	59.8	180	63.6	181	69.6	198	78.3	207	82.5	27	15.0
Tenure-Track	95	31.6	91	32.2	77	29.6	55	21.7	41	16.3	-54	-56.8
Non-Tenure Track	26	8.6	12	4.2	2	0.8	0	0.0	3	1.2	-23	-88.5

Note.

Official Fall 2023 figures will be available in April 2024.

Source.

IPEDS Human Resources Survey